

## FLOWER OF LIFE JEWELRY



**The FLOWER OF LIFE (FOL)** is a secret geometric code used by several advanced races and space travelers. Its code actually contains all the wisdom found in the universe similar to the genetic code contained within our own DNA. It goes beyond ordinary forms of teaching and lies beneath the very structure of reality itself. All the harmonics of light, sound and music exist within this geometric structure, which exists as a holographic pattern, defining the shape of both atoms and galaxies alike. **This timeless gift from all ancestors brings healing and consciousness for all time.**

**The MANDALA** pendant is the combination of two superimposed FOLs, one in the masculine axis (gold), the other in the feminine (silver), thus forming a delicate and perfect rose or kaleidoscope effect. It is for purification and the development of intuition. We have received many comments about the amazing effects of the FOL pattern for healing purposes. It can be used as an etheric soap, by sweeping the area needing an aura cleansing. This procedure can be done by anyone as a part of one's daily routine. Much more has to be discovered about the effects of this amazing ancient pattern found in twenty plus countries: Egypt, Tibet, Peru etc...

**To be used by therapists.**

The mandala costs \$95 for a 3cm and \$99 for a 4cm (2 inches). We can add a chakra color inside for another \$5.

### Testimonials:

*One day a gentleman saw the Mandala that we call the SOAP, and he was quite fascinated. The day after he came back to tell the strange experience he had with the design during his Meditation and he wanted me to take note without knowing what it meant. "If this pendant is activated by sound frequency, it is a transformer to go to inter-dimensional plane. It activates different types of RAYS. In his meditation he could identify 7 of them: 1) God's Will 2) Wisdom Intelligence 3) Love 4) Purity of God 5) Science, Invention, Healing 6) Service 7) Alchemy and change".*

*"The doublesided merkaba in Lucite is a big hit out here...I'd like to order ten...You can really feel it... my sister in law did well with the silver side and my brother with the gold...Boy, is his field large!!! You can actually get the shape of the aura with that device. I think you should carry it that way, and call them "The Energy Scrub" or "The Aura Scrub"...give yourself an aura shower!!" Atala*

*"I must tell you I love the flower of life with diamonds I got. I'm also very satisfied with the oils I ordered, White Light & Merkaba." Sampo, Finland*



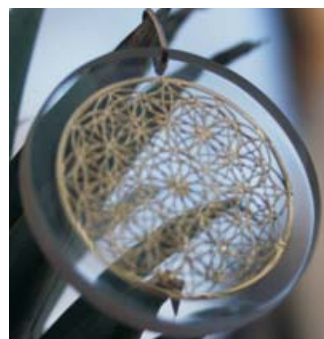
**MERKABA:** Also coming from the Flower Of Life symbol are those two Star Tetrahedron symbolizing the Mer-Ka-Ba, as found in the famous Leonard de Vinci canon.

The tetrahedron pointing up to the Sun is male. The one pointing down toward the Earth is female. (cf. Drunvalo's book on The Ancient Secret of The Flower Of Life Volume 1, page 48-49).

Those will help you remember and prepare

yourself for the eventual reactivation of your lightbody, the Merkaba. The photo shows the masculine one.

By adding colors it enhances different chakras. It comes in 7 chakra color and cost \$97.



We also carry new designs like:



**The CHARTRES LABYRINTH:** When we enter the labyrinth, we leave the physical world. As we walk, we release to Mother Earth that which we no longer choose to carry in exchange. On our journey through the labyrinth, we will rebalance each of the four orbs of the brain, taking us back to our center. From there, we create our new life. With a healing stone in the center (hematite or malachite) \$105.



**VENUS:** It is the exact cyclic circumvolution of VENUS around the Earth. As Venus cycles around the Earth, she is to us the “morning star” teacher of women. (\$105)



**LOTUS CROSS:** The replica of a diadem worn by Nefertiti opens the heart to the four directions uniting us with ancient harmony, balance, wisdom and knowledge. It comes in 2 colors and with an hematite, but can be special ordered with different stones. (\$105)

Testimonial: *The Lotus Cross is also a sign of a Mastery of some kind. Some see an improvement for the vision.*



**8 PETALS FLOWER:** This pattern is the rebalancing of the body, mind, spirit chakra system bringing them to the center of the 8 pointed star. It strengthens the body and brings us into our power. It is the guidance of the ancients (kings, Pharaoh etc, ). Orange brings our body into our power with the earth (green) and the Universe (blue). It brings us to our full power which is the yellow. (\$105)

**FOL with diamonds.**  
Here is a sample of what we offer. (\$125)



For more information, contact Marie Allizon, (703) 847-6147,  
or toll free 1 888-320-6610 or  
[kalumet@4dshift.com](mailto:kalumet@4dshift.com) or our website : [www.4dshift.com](http://www.4dshift.com).  
For the jewelry without lucite,  
go to [www.4dshift.com/products/flower.htm](http://www.4dshift.com/products/flower.htm)